



GRANT FRASER  
TOWN & COUNTRY

Craven Cottage 6 High Street, Ashbury, Oxfordshire, SN6 8NA  
**Guide price £575,000**



## Craven Cottage 6 High Street, Ashbury, Oxfordshire, SN6 8NA

**Guide price £575,000**

Located in the charming village of Ashbury, Oxfordshire, this delightful Grade II listed terraced cottage offers a unique blend of character and modern comfort. With three inviting reception rooms, this home provides ample space for both relaxation and entertaining. The well-appointed kitchen breakfast room is perfect for enjoying leisurely meals with family and friends.

The property boasts three spacious bedrooms, ensuring plenty of room for a growing family or guests. The four-piece bathroom, thoughtfully designed, adds a touch of luxury to your daily routine. For those chilly evenings, the cottage features two log burners, creating a warm and cosy atmosphere throughout the home.

Recently re-thatched in 2019, the cottage retains its traditional charm while benefiting from modern updates. Located at the foothills of The Ridgeway, an Area of Outstanding Natural Beauty, residents can enjoy stunning walks and a wealth of outdoor activities right on their doorstep.

The village itself offers a welcoming community with a local pub and shop, providing essential amenities. For those needing to commute, the property is conveniently situated just 6.5 miles from the M4 motorway and 9.5 miles from Swindon train station, which offers direct links to London Paddington.

This enchanting cottage is a perfect opportunity for anyone seeking a peaceful village lifestyle while remaining well-connected to larger towns and cities. Don't miss the chance to make this charming property your new home.

## Description

Comprising entrance hallway, living room, dining room, kitchen breakfast room, study/reception room, four-piece bathroom, three bedrooms. The entrance hallway has wall space for some coats and shoes to be stored along with a handy under stair cupboard. The living room is dual aspect, has an inglenook fireplace with a large log burner and red brick floor, this leads through to the kitchen breakfast room, being hand made in timber with granite worktops along with a second log burner and window seat. Off the rear of the kitchen is the dining room with stone floor, Velux windows, views and access to the garden. The study/reception room is situated off the front entrance hallway and leads through to the ground floor four-piece bathroom, also enjoying views of the garden. There are two staircases at each end of the building with a route through on the first floor from one end to the other, where there are three double bedrooms.

Outside the rear garden has been landscaped to include two lawn areas, patio, timber lock up plus sheltered area, ideal for timber storing along with a timber garden room. Access is via two neighbouring gardens for garden materials or filling of the oil tank. Parking is on the street to the immediate front, where the current owners have always parked two vehicles.

Services: We understand mains water, electricity, and sewage are connected to the property. Oil fired central heating via external boiler (replaced 2019) with an internal hot water tank and piped radiator heating.



## Situation

Ashbury sits in the foothills of the famous Ridgeway area of outstanding natural beauty, along with its many public open spaces and fields around, it is ideal for outdoor pursuits. A convenience shop and café are located in the village along with The Rose and Crown pub, known for its Sunday lunches.

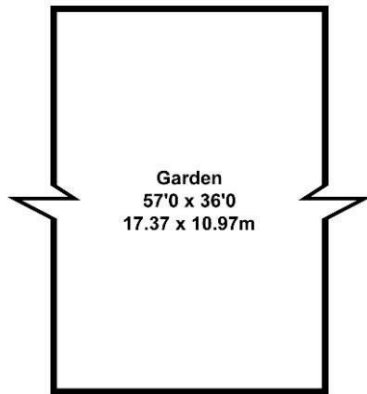
Helen Browning's farm and public house is located in the nearby village of Bishopstone, a local Brewery Arkells pub serving food as well as local ales. The village benefits from its own primary school, with Faringdon community college being the areas secondary school. The area has great transport links, the M4 motorway access 4 miles from the property, the A419 links to the M5 Motorway. Swindon Station is approximately 6 miles away and trains to central London, Bath and Bristol and the West Country run on a regular timetable.



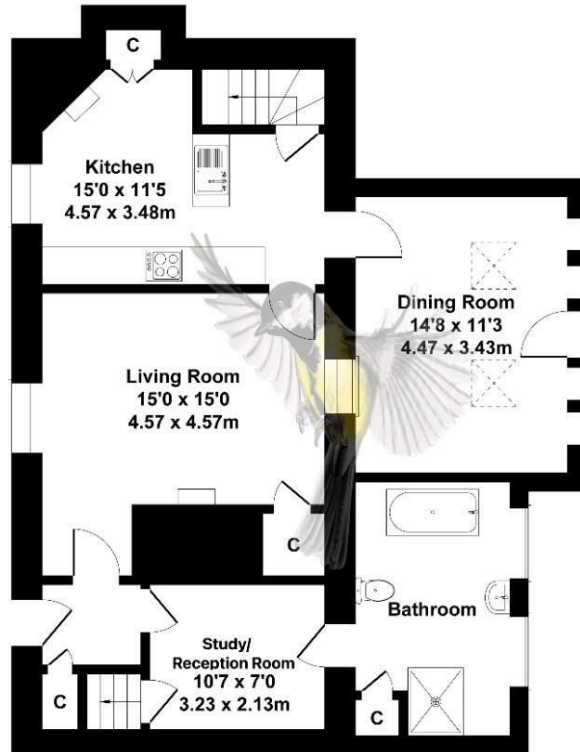
## Floor Plans

### Craven Cottage, 6 High Street Ashbury, Oxfordshire, SN6 8NA

Approximate Gross Internal Area  
1378 sq ft -128 sq m

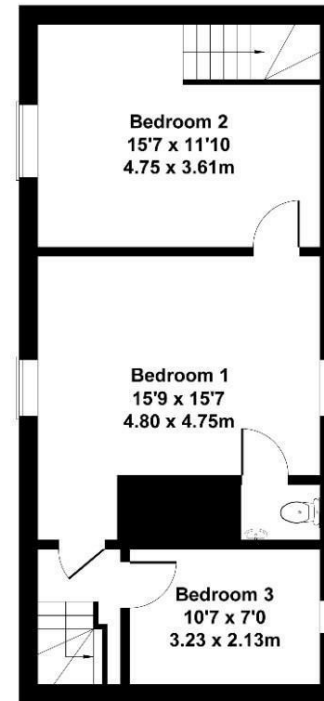


**GARDEN**



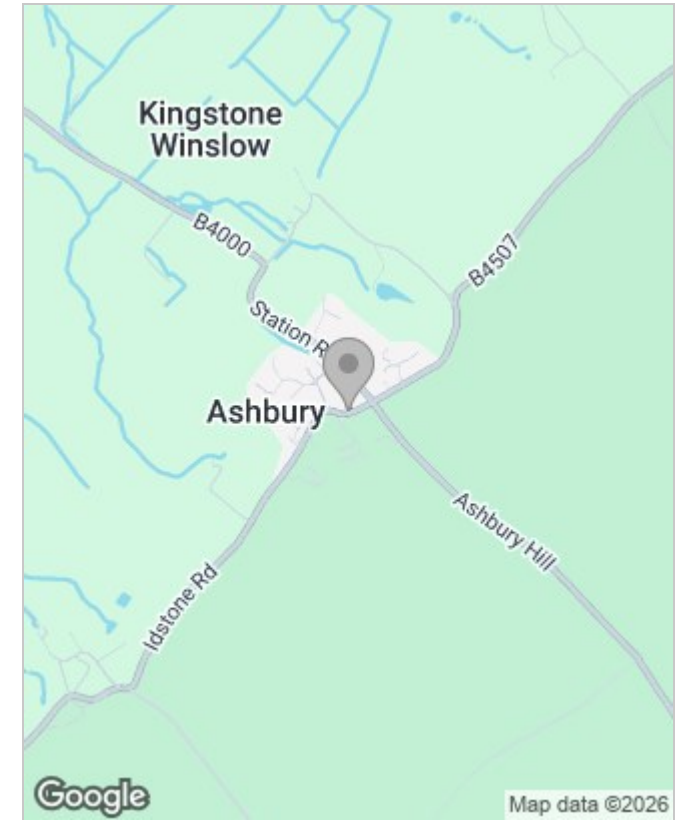
**GROUND FLOOR**

Not to Scale. Produced by The Plan Portal 2026  
For Illustrative Purposes Only.

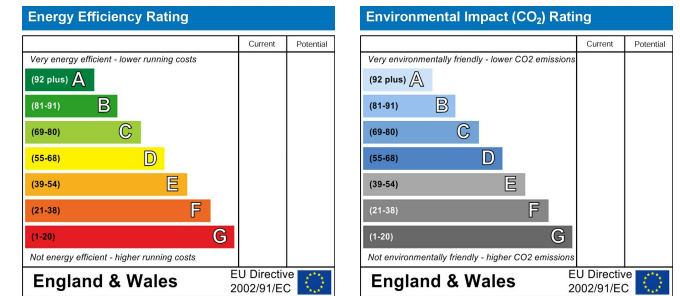


**FIRST FLOOR**

## Area Map



## Energy Performance Graph



White Elm Newtown, Bishopstone, Swindon, Wiltshire, SN6 8QA

Tel: 01793 228 440 Email: info@grantfrasertc.co.uk